

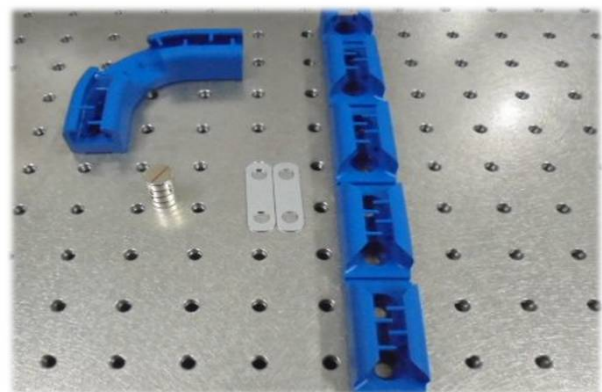
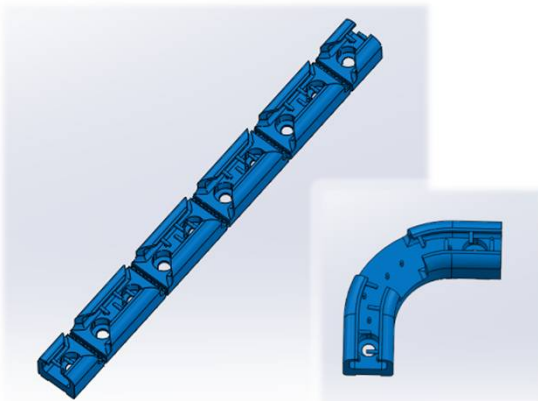
Patent pending

FiberQuester

Pursuit of a neat optical fiber wiring

Features

- **Convenient for housing and routing optical fiber cables**
 - Fiber cables can be easily branched off from the side V-cut of FiberQuester.
- **Easy for mounting on an optical bench or rack**
 - You can use standard M6 screws to mount FiberQuesters on an optical bench.
(fit to M6 screw holes at 25mm pitch)
 - You can also use the supplied magnets to mount FiberQuesters on any iron racks or walls.
 - With the supplied connecting plates, you can connect many FiberQuesters together.
- **Flexible for versatile routing**
 - Thanks to the slit cut on the base side of line-type FiberQuester, you can even assemble a flexible 3D overpass for fiber cables.
 - By cutting apart along these slits on the base side, a single line-type FiberQuester will turn into several independent fiber holders.



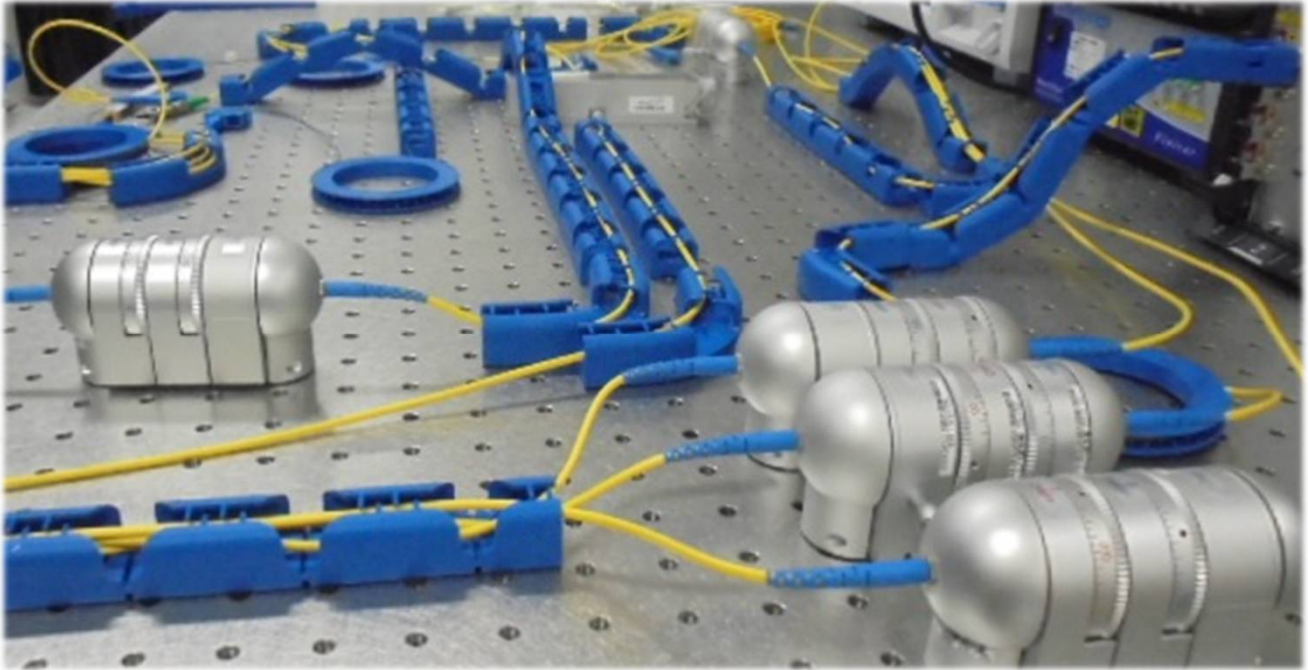
Specification

| Part number | FQ-SA | |
|-----------------------------|---|----------|
| Contents | <ul style="list-style-type: none"> ▪ Line type × 5 ▪ Arc type × 2 ▪ Magnet × 14 ▪ Connecting plate × 14 | |
| Shape | Line type | Arc type |
| Length | 250mm | 74.5mm |
| External dimensions (W × H) | 24mm × 20mm | |
| Housing capacity | Up to 10 fibers ※ | |
| Material | Special rubber (Blue color) | |
| Storage temperature range | -40~150°C | |

※ In the case of ϕ 3mm cable

▪ Product specifications, shapes, etc. may be changed for improvements without prior notice.

Examples of use



Routing optical fiber cables on the optical bench



Storing the fiber patch cords in a compact circle

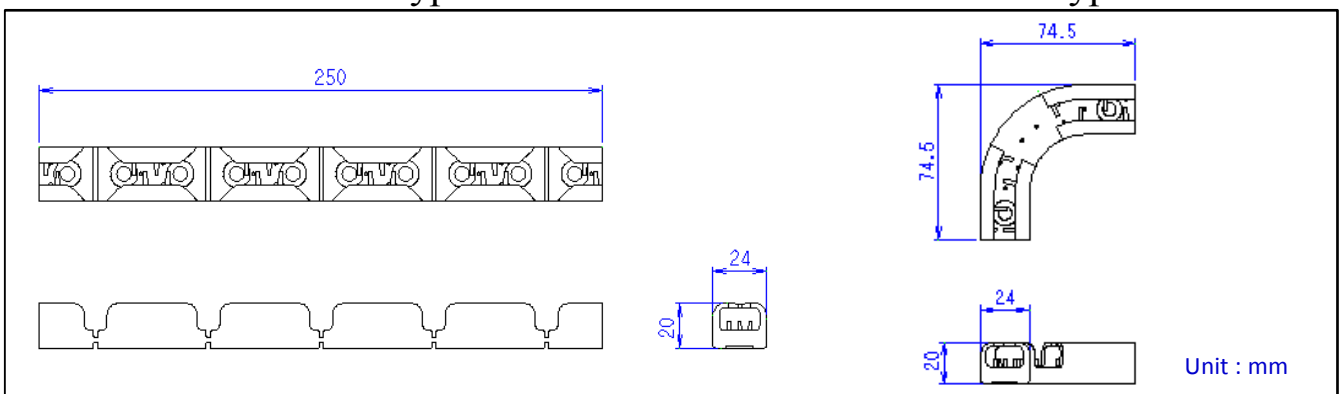


Routing the optical fiber cables on the side of a rack

Dimensions

Line type

Arc type



Contact

OPTOQUEST CO., LTD.
 4-3-10-2F in Nihonbashi Honcho, Chuo-ku, Tokyo, 103-0023
 TEL: +81-3-5200-0801 FAX: +81-3-5200-0803
 E-mail: sales-info@optoquest.co.jp



OPTOQUEST